


Surveillance Simplified for a Growing World

Safeguarding Businesses with All-Comprehensive Surveillance Solutions



A low-angle, upward-looking photograph of a modern building's exterior. The building features a dark, slanted roofline and a facade composed of large, light-colored rectangular panels separated by dark lines. Two white security cameras are mounted on the dark roof edge. The top camera is a bullet-style camera pointing upwards. The bottom camera is a dome-style camera with a small display screen on its side, also pointing upwards. The sky is a pale, overcast blue.

The realm of surveillance is undergoing rapid changes owing to the advent of innovative devices, diverse capabilities, elevated video standards, extended video storage durations, and a surge in data and storage needs. In response to these developments, organizations find themselves in need of an enterprise-class surveillance solution. Such a solution must seamlessly amalgamate surveillance and business data while embodying traits of resilience, scalability, and reliability. The CP PLUS Surveillance Solution presents itself as a sophisticated infrastructure system, encompassing both software and hardware definitions. This system tightly integrates computing, storage, networking, and virtualization resources, thereby enhancing overall system performance and reducing the total cost of ownership. This comprehensive solution caters to various industry verticals, including retail, oil & gas, safe city initiatives, education, and more, offering specialized features such as explosion-proof cameras, thermal cameras, mobile surveillance, and AI solutions tailored for specific sectors. By embracing these cutting-edge technologies, CP PLUS empowers organizations to achieve greater value in their surveillance endeavors.

CP PLUS: Safeguarding Businesses with All-Comprehensive Surveillance Solutions

Discover the peace of mind that comes with CP PLUS's end-to-end surveillance solutions tailored for diverse verticals. Our smart security solutions ensure robust protection for your business, addressing concerns such as intruders, break-ins, vandalism, and more.

With CP PLUS's end-to-end surveillance solution, you can trust in a complete security system customized to meet your specific requirements. This encompasses a wide range of cameras and networked security devices, all meticulously tested and validated by CP PLUS to ensure reliable operations. At the core of the system, CP PLUS's video management software seamlessly coordinates the functionality of all components, providing user-friendly operation.

Choose from our renowned CP PLUS network surveillance cameras, available in various versions including fixed outdoor cameras, discreet dome cameras, panoramic cameras, and positioning cameras designed to track unwanted activities. Our thermal cameras even operate in complete darkness, ensuring comprehensive visibility. Integrated loudspeakers deter intruders with live or pre-recorded audio messages, while network intercoms at entrances allow audio-visual identification and communication with visitors, giving you complete control over access to your premises.

The powerful recorder, equipped with advanced software, acts as the mastermind of your surveillance system. It captures and stores all relevant video and audio activities, allowing for real-time or subsequent review through your phone, tablet, or laptop. CP PLUS analytics applications enable cameras to distinguish between malicious and benign activities, deciding whether to record and alert you. These applications can even read and interpret license plates on vehicles.

In essence, CP PLUS's end-to-end surveillance solutions ensure the ongoing protection of your business. You have the flexibility to combine various components according to your current needs and adapt as your business grows or evolves. Trust CP PLUS to safeguard your business, providing a reliable and customizable surveillance solution for today and the future.



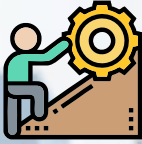
Real Estate Solution

CP PLUS's Real Estate Solution is a sophisticated and tailored security system customized to safeguard properties, construction sites, and residential as well as commercial developments. This comprehensive solution addresses all the varied challenges faced by the real estate industry, offering features that enhance security and facilitate construction site management while protecting assets.

As a comprehensive security system that addresses the diverse needs of the real estate industry, it incorporates advanced technologies and features, this solution not only enhances security but also contributes to the efficient management of properties, ensuring a safe and secure environment throughout various stages of development.



Intelligent Surveillance for Real Estate Vertical



CHALLENGES

- Unauthorized intrusion of vehicles/people
- Major target of theft/robbery
- Vandalism of property or vehicles
- Installation of CCTV camera inside the lifts
- Parking management issues
- No monitoring and maintenance of property
- Multiple platforms difficult to manage



SOLUTION

- High resolution cameras at Entry Point to recognise entry of unauthorized vehicle s or person
- ANPR solution and Face recognition cameras at entry point to provide analytical results for quick retrieval of information
- Bullet camera with intrusion detection analytics for perimeters further supported by PTZ cameras
- ANPR cameras at Parking entry Point
- High resolution camera with Audio integration for parking areas
- WDR camera with high resolution cameras at Lobby area for proper face recognition
- Wide coverage cameras for lift areas
- Multi-Apartment VDP IP Solution for visitor verification and authentication
- Monitoring of CCTV camera in the VDP indoor unit
- Control Room monitoring software for CCTV camera, VDP outdoor unit cameras, message broadcasting, SOS support, audio call, etc.

Houses



Villas

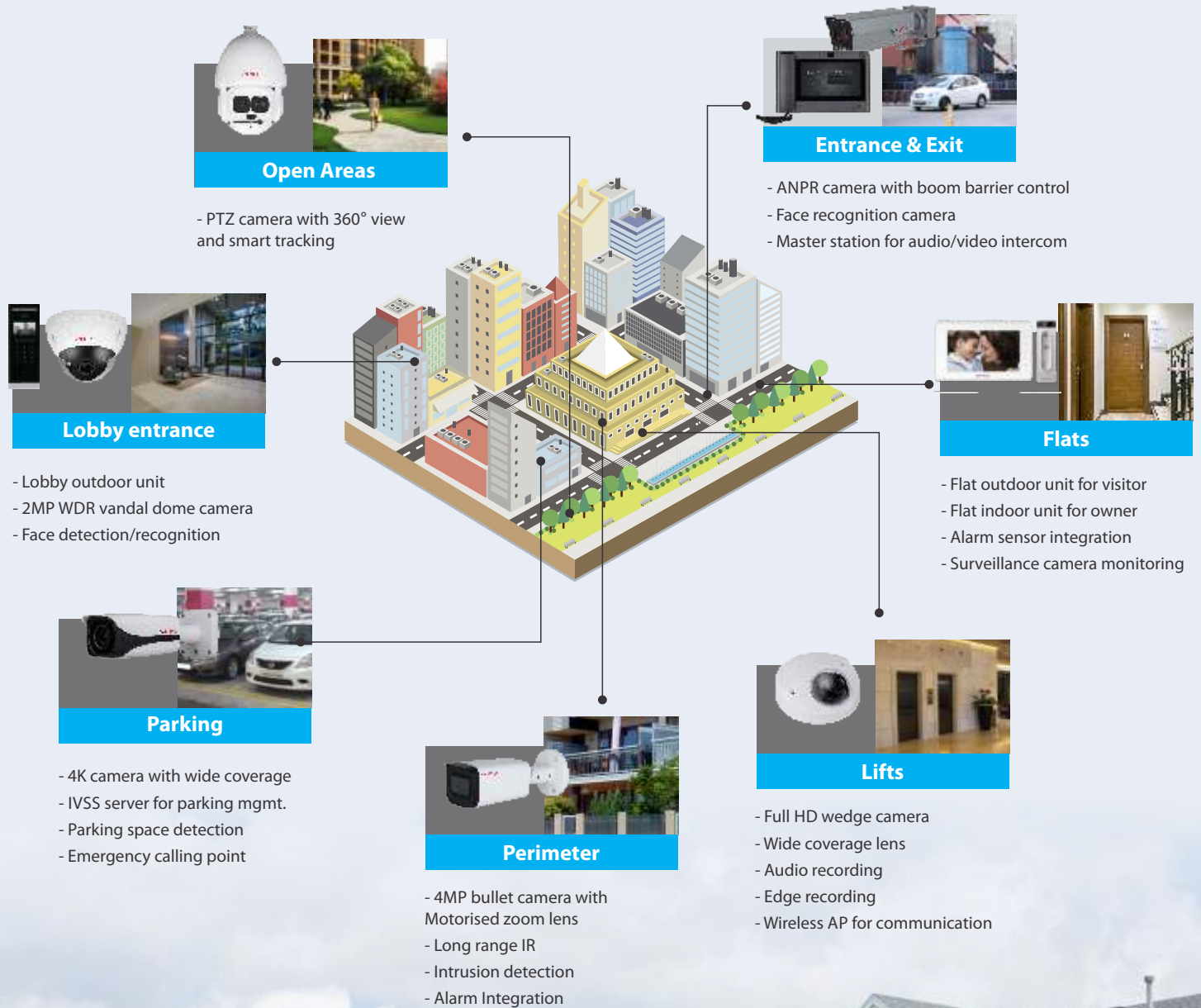


Apartments



Real Estate Surveillance Solution

Solution Overview



Real Estate Solution

CP-UNC-TT41L3-VM

4MP IR AI Enforcement Camera



- Features:
- 1/1.8" 4MP starlight CMOS sensor (1.411 cm)
 - H.265 and H.264 dual codec
 - Maximum Resolution: 2688 × 1520@25/30fps
 - Built-in 10mm~50mm lens
 - The maximum illumination distance is 30 Mtr
 - IP67, IK10 rated

CP-UNC-TG41ZL6-VMD

4MP AI IR Network Bullet Camera



- Features:
- 1/1.8" 4MP PS CMOS Image Sensor
 - Max. outputs 4MP(2688×1520)@50fps/60fps
 - 2.7-12mm motorized lens
 - WDR(140dB), Day/Night (ICR), 3D-DNR, EIS, Defog, ROI, AWB, AGC, BLC, HLC
 - Instastream /H.265/ Smart H.264+ /H.264 coding
 - IR Range of 60 Mtrs, IP67, IK10, Micro SD Card, PoE+
 - With deep learning algorithm, it supports people counting, face recognition, perimeter protection etc
 - Mobile Software: iCMOB, gCMOB, CMS Software: KVMS Pro

CP-UNC-VG41ZL4-VMD

4MP AI IR Network Vandal Dome Camera



- Features:
- 1/1.8" 4MP PS CMOS Image Sensor
 - Max. outputs 4MP(2688×1520)@50fps/60fps
 - 2.7-12mm motorized lens
 - WDR(140dB), Day/Night (ICR), 3D-DNR, EIS, Defog, ROI, AWB, AGC, BLC, HLC
 - Instastream /H.265/ Smart H.264+ /H.264 coding
 - IR Range of 40 Mtrs, IP67, IK10, Micro SD Card, PoE+
 - With deep learning algorithm, it supports people counting, face recognition, perimeter protection etc
 - Mobile Software: iCMOB, gCMOB, CMS Software: KVMS Pro

CP-UNC-TB41ZL6C-VMD5

4MP Network IR Bullet Camera



- Features:
- 1/2.9" 4MP Progressive CMOS Image Sensor
 - Instastream, Smart H.264, Dual stream encoding
 - Max. 4 MP (2688 × 1520)@20 fps, 2560 × 1440@25/30 fps
 - WDR(120dB), Day/Night(ICR), 3D-DNR, ROI, AWB, AGC, BLC
 - 2.7mm-13.5mm Motorized Lens
 - IR Range of 60 Mtrs.
 - Built in Mic., Micro SD Card, IP67, IK10 (optional), SMD Plus
 - Support Starlight Function
 - Mobile Software: iCMOB, gCMOB, CMS Software: KVMS Pro

CP-UNC-TC41L8-VMD5

4MP WDR IR Network Bullet Camera



- Features:
- 1/2.7" 4MP CMOS Image Sensor
 - Instastream & H.265 triple-stream encoding
 - Max. 25/30fps@4MP
 - 3.6mm fixed lens (6mm, 8mm, 12mm optional)
 - WDR(120dB), Day/Night(ICR), 3D-DNR, ROI, AWB, AGC, BLC, HLC
 - IR Range of 80 Mtrs., IP67, Micro SD Card, PoE
 - Support Starlight Function
 - Mobile Software: iCMOB, gCMOB, CMS Software: KVMS Pro

CP-UNC-TE81ZL6E-VMD5

8MP AI WDR IR Network Bullet Camera



- Features:
- 1/1.8" 8MP PS CMOS Image Sensor
 - Outputs Max. 8MP (3840× 2160)@25/30fps
 - Instastream & H.265 triple-stream encoding
 - Support Starlight Function
 - WDR(120dB), Day/Night (ICR), 3D-DNR, Defog, ROI, AWB, AGC, BLC, HLC
 - 2.7-12mm Motorized lens, IR Range of 60 Mtrs, Micro SD Card, IP67, IK10, ePoE, PoE
 - Mobile Software: iCMOB, gCMOB, CMS Software: KVMS Pro

CP-UNC-WC21L5C-MDS

2MP Full HD WDR IR Network Wedge Camera



- Features:
- 1/2.8" 2MP CMOS Image Sensor
 - Instastream & H.265 triple-stream encoding
 - Max. 25/30fps@2MP
 - 2.8 mm fixed lens (3.6mm, 6mm optional)
 - WDR(120dB), Day/Night(ICR), 3D-DNR, ROI, AWB, AGC, BLC, HLC
 - IR Range of 50 Mtrs, IP67, IK10, Micro SD Card, PoE
 - Support Built-in Mic
 - Support Starlight Function
 - Mobile Software: iCMOB, gCMOB, CMS Software: KVMS Pro
 - M12 Connector

CP-USC-WB24L2C-D

2.4MP Full HD IR Mobile Wedge Camera - 20Mtr.



- Features:
- 1/2.8" 2.4MP CMOS Image Sensor (0.9071 centimeters)
 - Max 30fps@2.4MP
 - WDR(120dB), Day/Night(ICR), 3D/2D-DNR, AWB, AGC, BLC, HLC
 - 3.6mm fixed lens (2.8mm optional)
 - IR Range of 20 Mtrs., Smart IR, IP67, IK10
 - IP6K9K, Shock-proof
 - Audio in interface, Support Built-in Mic
 - HDCVI output (Aviation connector)
 - HD, SD and Two Analog format Output

CP-UNC-VE21ZL4P-VMD

2MP Full HD WDR IR Network Vandal Dome Camera



- Features:
- 1/1.8" 2Megapixel PS CMOS Image Sensor
 - Instastream/ H.265 / H.264+ / H.264 Quad Stream encoding
 - Max 25/30fps@1080P(1920×1080)
 - WDR(140dB), Day/Night (ICR), 3D-DNR, EIS, Defog, ROI, AWB, AGC, BLC, HLC
 - 2.7mm ~12mm motorized lens
 - IR Range of 40 Mtrs., Micro SD Card IP67, IK10, PoE, ePoE
 - Mobile Software: iCMOB, gCMOB, CMS Software: KVMS Pro

CP-UNP-H4041L45-DAP

4MP 40x WDR Network IR PTZ Camera



- Features:
- 1/1.8" 4MP CMOS Image sensor
 - Max. 25/30fps@4MP
 - 5.6mm~223mm Lens (40x Zoom)
 - WDR(120dB), ICR, 2D/3D-DNR, Defog, ROI, EIS
 - Instastream/H.265/H.264+/H.264 triple-stream
 - Up to 300 Presets, auto scan, 8 tour, 5 pattern
 - IR Range of 450 Mtr., IP67, Micro SD Card, Auto Tracking, Hi-PoE
 - Support Starlight Function
 - Mobile Software: iCMOB, gCMOB, CMS Software: KVMS Pro

CP-UNP-F4521L30-DAP

2MP 45x WDR Network IR PTZ Camera



- Features:
- 1/2.8" CMOS Image sensor
 - Max. 50/60fps@2MP
 - 3.95mm~177.7mm Lens (45x Zoom)
 - WDR(120dB), Day/Night(ICR), Ultra DNR, Auto iris, Auto focus, Defog, ROI, EIS, AGC, BLC, HLC
 - Instastream /H.265/H.264+ /H.264 dual-stream encoding
 - Up to 300 Presets, auto scan, 8 tour, 5 pattern, auto pan
 - IR Range of 300 Mtr., IP67, Micro SD Card, Auto Tracking Support Hi-PoE
 - Mobile Software: iCMOB, gCMOB, CMS Software: KVMS Pro

Real Estate Solution

CP-UHB-GP03

Master Station



- Features:
- 10-inch capacitive high resolution LCD provides good human machine interaction
- Supports 4 720P channels
- Supports two audio output modes: handsfree and handset.
- Easy to operate, no need to install, bracket angle range 0°—45°
- SD card expansion makes videos and snapshots can be restored locally.

CP-UNB-C41TR-V2

IP Face Recognition Apartment Door Station



- Features:
- 4.3 inch IPS display; screen resolution 800×480
- 2MP CMOS; true WDR
- Face-camera distance: 0.3 m—2 m; human height: 1.1 m—2.4 m (lens- ground distance: 1.4 m)
- Touch button; IP65
- Auto light illumination reduces light pollution
- Multiple unlock modes: Password unlock, IC card unlock, remote unlock and face unlock
- Support 20, 000 users, 10,000 face images, and 10, 000 cards · Face recognition speed: 0.2 second per person
- Various unlock status display modes protect user privacy

CP-UVK-711M

IP Villa Door Station & Indoor Monitor



- Features:
- High definition camera; WDR
- IP65(Silicone sealant is needed.)
- Supports auto IR illumination and D/N
- Card/app remote/indoor monitor unlock
- 10,000 cards
- Alarm integration
- Embedded 8GB SD card
- Control two locks

CP-UNC-TA41PL3

4MP Network IR Bullet Camera



- Features:
- 1/3" 4MP PS CMOS Image Sensor
- Max. Outputs 4MP (2560 × 1440)@25/30 fps.
- Instastream and H.264 dual-stream encoding
- DWDR, Day/Night(ICR), 3D-NR, ROI, AWB, AGC, BLC, HLC
- 3.6mm lens (2.8mm optional)
- IR Range 30 Mtrs, IP67
- Mobile Software: iCMOB, gCMOB, CMS
- Software: KVMS Pro

CP-UNB-C02L-P

2MP Modular Apartment Door Station



- Features:
- Anodized aluminum front panel
- CMOS low illumination 2MP HD colorful 160° fisheye camera
- Video intercom function
- Access control function that supports two locks
- IK07&IP65
- Support surface and flush mount

CP-UVK-701MTA

Video Intercom Kit with Memory



- Features:
- 7" TFT screen
- Video intercom function: Unlock, voice call, video call, volume adjustment, doorway monitoring
- System Capacity: 2 door stations + 3 indoor monitors
- Multiple bell sounds
- Supports digital wide dynamic range (DWDR)
- In-Built Memory (200 Snapshots)
- Outdoor Unit: Camera 1/4" 1.3MP CMOS

CP-PVK-70MTH1

7" Color Video Door Phone Kit With Memory



- Features:
- 7" Colour TFT-LCD Display
- Feather-touch Keypad
- Super Slim hands-free Model With Memory (100 Snapshots)
- High Resolution Colour Camera 700TVL, With IR LED for Night Vision
- Rain Cover & Mount Angle Available
- Support Additional 3 Indoor Units & 2 Outdoor Units, 2 CCTV In
- Supports Intercom
- 1 CCTV Out for Recording

CP-TA-ER2A-NC

Electric Rim Lock



- Features:
- 5Pcs of Iron Computer Keys
- Double Brass Cylinders
- Brass Latch
- Satin Nickel Finish
- Adjusted Backset

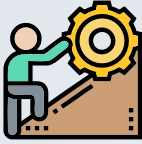
Banking (BFSI) Solution

CP PLUS's Banking (BFSI) Solution is a comprehensive security system specifically developed to meet the stringent requirements of the Banking, Financial Services, and Insurance (BFSI) sector. With an unwavering commitment to safeguarding critical financial assets, this solution integrates advanced technologies to provide a robust security infrastructure for banking institutions.

A sophisticated and tailored security system designed to address the varied challenges faced by banking institutions. By combining advanced technologies with features specific to the BFSI sector, this solution establishes a secure and resilient environment for financial operations, safeguarding the assets and trust of both institutions and their customers.



Intelligent Surveillance for Banking Vertical



CHALLENGES

- High resolution video for post analysis
- Ensure safety of customers and employees
- Track transactions for bank and customer satisfaction
- Reliability of system
- Increase business efficiency and enhance customer service
- Incident Management
- Instant Reporting System
- Health monitoring at control room for system ability



SOLUTION

- High resolution cameras and DVR will record details of the suspicious persons
- Low light CCTV cameras will capture images in such areas
- The proposed system will leverage existing analog camera base
- Introduction of network video surveillance to detect potential security threats

Branch



ATM

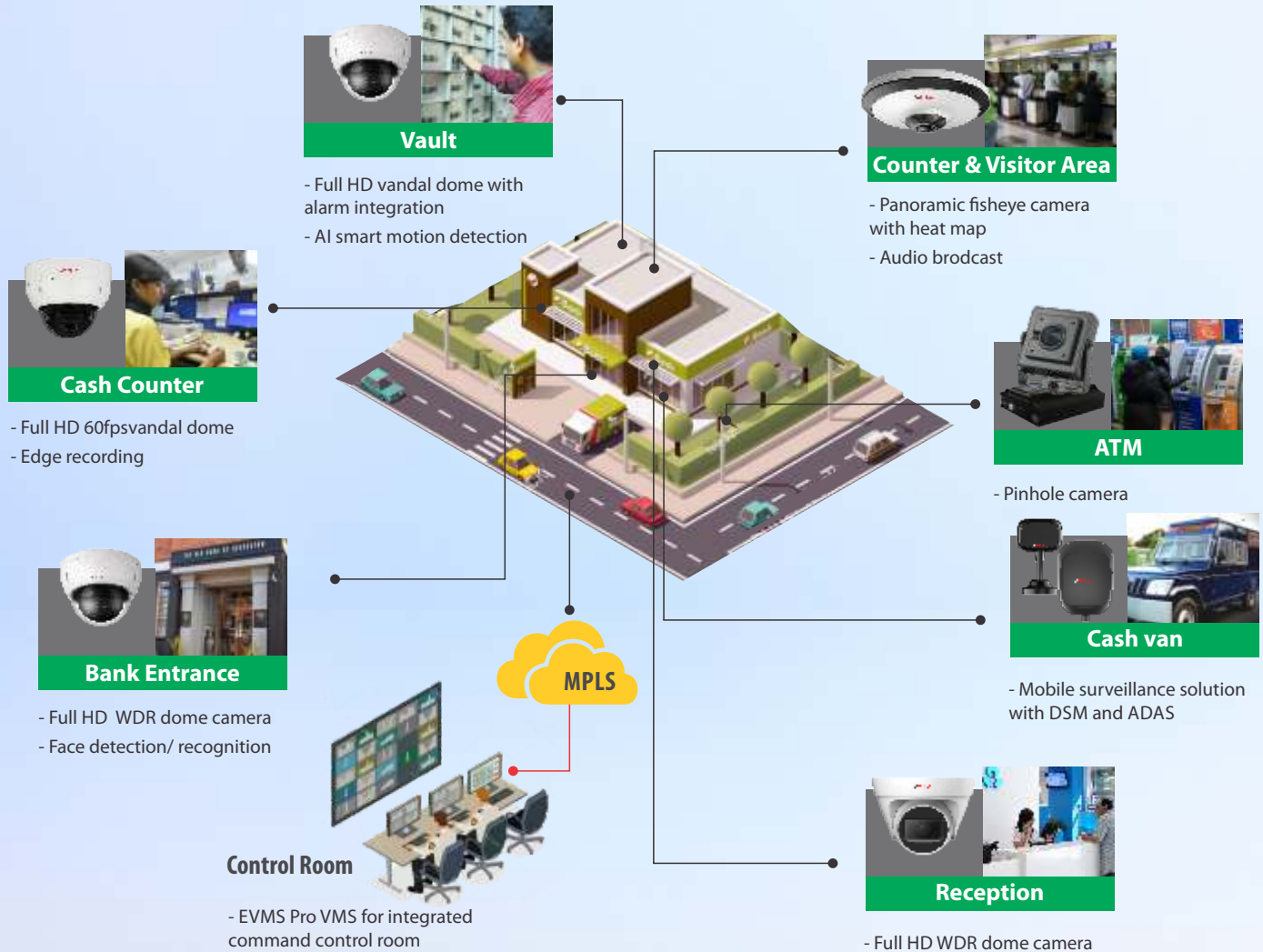


Cash Van



Banking (BFSI) Surveillance Solution

Solution Overview



Banking (BFSI) Solution

CP-UNC-EE51L1C-VMD

5MP Panoramic Network IR Fisheye Camera



► Features:

- 1/2.7" 5MP progressive scan CMOS Image Sensor
- Instastream & H.265 triple-stream encoding
- Max. 25fps@5MP(2592×1944)
- WDR(120dB), Day/Night (ICR), 3D-DNR, ROI, AWB, AGC, BLC, HLC
- 1.4mm fixed lens, Built-in Mic, Micro SD Card, PoE
- IR Range of 10 Mtr.
- Mobile Software: iCMOB, gCMOB, CMS Software: KVMS Pro

CP-UNC-EH4K12L1-VM

12 MP Network Fisheye Camera



► Features:

- 1/1.7" 12MP CMOS Image Sensor
- H.265 & H.264 triple-stream encoding
- Max. 25fps@12MP
- 1.98mm fixed lens
- DWDR, Day/Night(ICR), 3DNR, AWB, AGC, BLC
- IR Range of 10 Mtrs., IP67, IK10, PoE, Micro SD Card
- Mobile Software: iCMOB, gCMOB, CMS Software: KVMS Pro

CP-UNC-PD21-VD-V2

2MP Full HD WDR Network Pinhole Camera



► Features:

- 1/2.8" 2MP PS CMOS Image Sensor
- Max. 25/30fps@1080P (1920×1080)
- 2.8mm Fixed Lens
- WDR(120dB), 3D-DNR, ROI, AWB, AGC, BLC, HLC
- Smart Instastream and H.264+ dual-stream encoding
- Mobile Software: iCMOB, gCMOB, CMS Software: KVMS Pro

CP-UNC-DA21PL3-V3

2MP Full HD IR Network Dome Camera



► Features:

- 1/2.8" 2MP PS CMOS Image Sensor
- Max. 2MP (1920 × 1080)@25/30fps
- Instastream/Smart H.265 Dual-stream encoding
- DWDR, Day/Night (ICR), 3D-DNR, ROI, AWB, AGC, BLC, HLC
- 3.6mm fixed lens (2.8mm Optional)
- IR Range of 30 Mtrs, IP67, PoE
- Mobile Software: iCMOB, gCMOB, CMS Software: KVMS Pro

CP-UNC-VE21ZL4E-VMD

2MP Full HD AI WDR IR Vandal Dome Camera



► Features:

- 1/2.8" 2Megapixel PS CMOS Image Sensor
- Instastream/ H.265 / H.264+ / H.264 triple-stream encoding
- Max 25/30fps@1080P(1920×1080)
- 2.7mm ~13.5mm motorized lens
- WDR(120dB), Day/Night (ICR), 3D-DNR, EIS, Defog, ROI, AWB, AGC, BLC, HLC
- IR Range of 40 Mtrs., Support ePoE, PoE, IP67, IK10, Micro SD Card
- Mobile Software: iCMOB, gCMOB, CMS Software: KVMS Pro

CP-UNC-VG41ZL4-VMD

4MP AI IR Network Vandal Dome Camera



► Features:

- 1/1.8" 4MP PS CMOS Image Sensor
- Max. outputs 4MP(2688×1520)@50fps/60fps
- 2.7-12mm motorized lens
- WDR(140dB), Day/Night (ICR), 3D-DNR, EIS, Defog, ROI, AWB, AGC, BLC, HLC
- Instastream /H.265/ Smart H.264+ /H.264 coding
- IR Range of 40 Mtrs, IP67, IK10, Micro SD Card, PoE+
- With deep learning algorithm, it supports people counting, face recognition, perimeter protection etc
- Mobile Software: iCMOB, gCMOB, CMS Software: KVMS Pro



Enterprise Video Management Software

VMS software solution

- Server/Client Architecture
- Cascading for Multi-site Management
- Failover & Hot Standby
- Realtime Alarm Management
- Google Map Support
- Auto-Register
- Onvif Compliant
- Cloud Installation
- Automatic/Manual Data Migration & Restoration
- Video Wall
- Management



Banking (BFSI) Solution

Mobile Surveillance

CP-UA-DSM1

Driver Monitoring Camera



- Features:
- 1/4" 1MP CMOS image sensor
 - Max. Outputs 50 Hz (1280 × 720)@25fps, Max. Outputs 60 Hz (1280 × 720)@30fps
 - IR Range of 3m
 - 2D/3D NR, BLC, HLC, AGC, IP54
 - 9V–16VDC

CP-UA-ADA51

Front-view Monitoring Mobile Camera



- Features:
- 1/2.8" 2MP CMOS Image Sensor
 - Outputs 50 Hz (1920 × 1080)@25 fps. Outputs 60 Hz (1920 × 1080)@30 fps
 - WDR, 3D NR, BLC, HLC, AGC, IP54
 - 9V–16VDC

CP-UNC-WC21L5C-MDS

2MP Full HD WDR IR Wedge Camera



- Features:
- 1/2.8" 2Megapixel PS CMOS Image Sensor
 - Max. 2MP(1920 × 1080)@30fps
 - Instream and H.264+ triple-stream encoding
 - WDR(120dB), Day/Night (ICR), 3D-DNR, ROI, AWB, AGC, BLC, HLC
 - 3.6mm Lens (2.8mm, 6mm Optional)
 - IR Range of 50 Mtrs, IP67, IK10, Micro SD Card, PoE
 - Built-in Mic
 - Support Starlight Technology

CP-UNP-M3020L15-V2

2 MP Full HD Network Mobile Positioning System



- Features:
- 1/2.8" 2MP CMOS Image Sensor (0.9071 centimeters)
 - Pan range: 360° endless, speed up to 80°/s
 - H.264 and MJPEG Encoding
 - DWDR, 2D/3D DNR, AGC, AWB, BLC, HLC
 - 4.5mm ~ 135mm Lens
 - IR Distance up to 150 Mtr., IP66
 - Up to 255 Presets, 8 Tour, 5 Pattern, 5 Auto scan
 - Powerful 30x Optical Zoom

CP-UNR-404T1-AI

4 Ch. PoE H.265 AI Mobile Network Video Recorder



- Features:
- Supports 4 Ch. 2MP PoE IP cameras input
 - Support Instream/ H.265 video compression
 - Aviation connectors/ RJ45(Optional)
 - Support 1 HDD and 1 SD card, 3 USB Ports (2.0)
 - Support GPS, Wi-Fi and 3G/4G
 - VGA/TV simultaneous video output
 - Mobile Software: EMSS Pro, iCMOB/gCMOB (Live view and Playback)
 - CMS Software: EMSS Pro, KVMS Pro (Live view and Playback)

CP-UA-M70T

7" Color Liquid Crystal Display



- Features:
- 7" Widescreen TFT-LCD Display
 - LED Backlight
 - M12 A-coding Connector

CP-UMK-41D

Mobile Control Keyboard



- Features:
- Small size, 22 buttons, suitable for patrol cars, buses, application software and other small systems to use.
 - Four-dimensional operation joystick (3-axis and 1 button).
 - So that a smaller volume to achieve more functionality Specifically for the use of cars, low power consumption

EMSS Pro

Enterprise Mobile Surveillance Software



- Features:
- High Reliability & compatibility
 - Live View, Snapshot, local record, audio talk
 - Mobile alarms, E-fence alarms, GPS statistics.
 - Driver & Vehicle management
 - GPS upload interval time.
 - Service Management





Retail Solution

CP PLUS's Retail Solution is a comprehensive security system that goes beyond traditional surveillance, offering features that enhance loss prevention, customer safety, and overall operational efficiency for retail businesses. A customized security system that delivers more than conventional surveillance to meet the diverse needs of the retail sector. By incorporating advanced technologies and features, this solution enhances security, optimizes operations, and contributes to a safer and more efficient retail environment.

Intelligent Surveillance for Retail Vertical



CHALLENGES

- No proper recognition of the customer and staff
- Monitor staff behaviour against customers
- Preventing shoplifting has been one of the primary concerns
- Most prone to break-ins after retail hours
- Optimizing the shop floor efficiency.
- Purchase Invoice tracking
- Right deployment of staff, when the store is busiest
- Effective promotional offers.
- Keeping a watch on your housekeeping staff to ensure that they keep the store neat and clean



SOLUTION

- High resolution cameras for 24x7 monitoring
- People counting cameras at entrance points for footfall count and to know the trend of business
- Fisheye cameras for floor areas to cover 360° view with one camera
- Heatmap analytics to monitor the crowd at different store for business analysis
- Announcement for the promotions via audio I/O in camera
- High FPS camera at cash counter to monitor all transactions closely
- POS integration with cash counter cameras to make video more meaningful
- Panic Button at Cash counter for emergency situation
- Low light cameras in store rooms

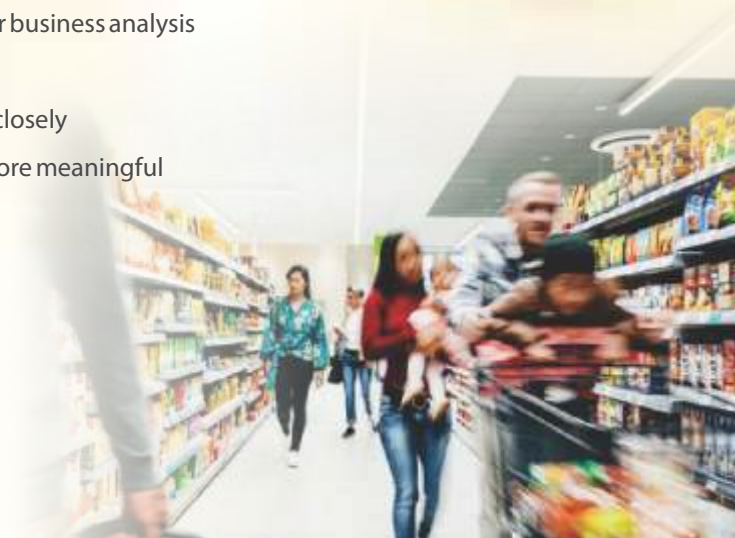
Super Markets



Malls

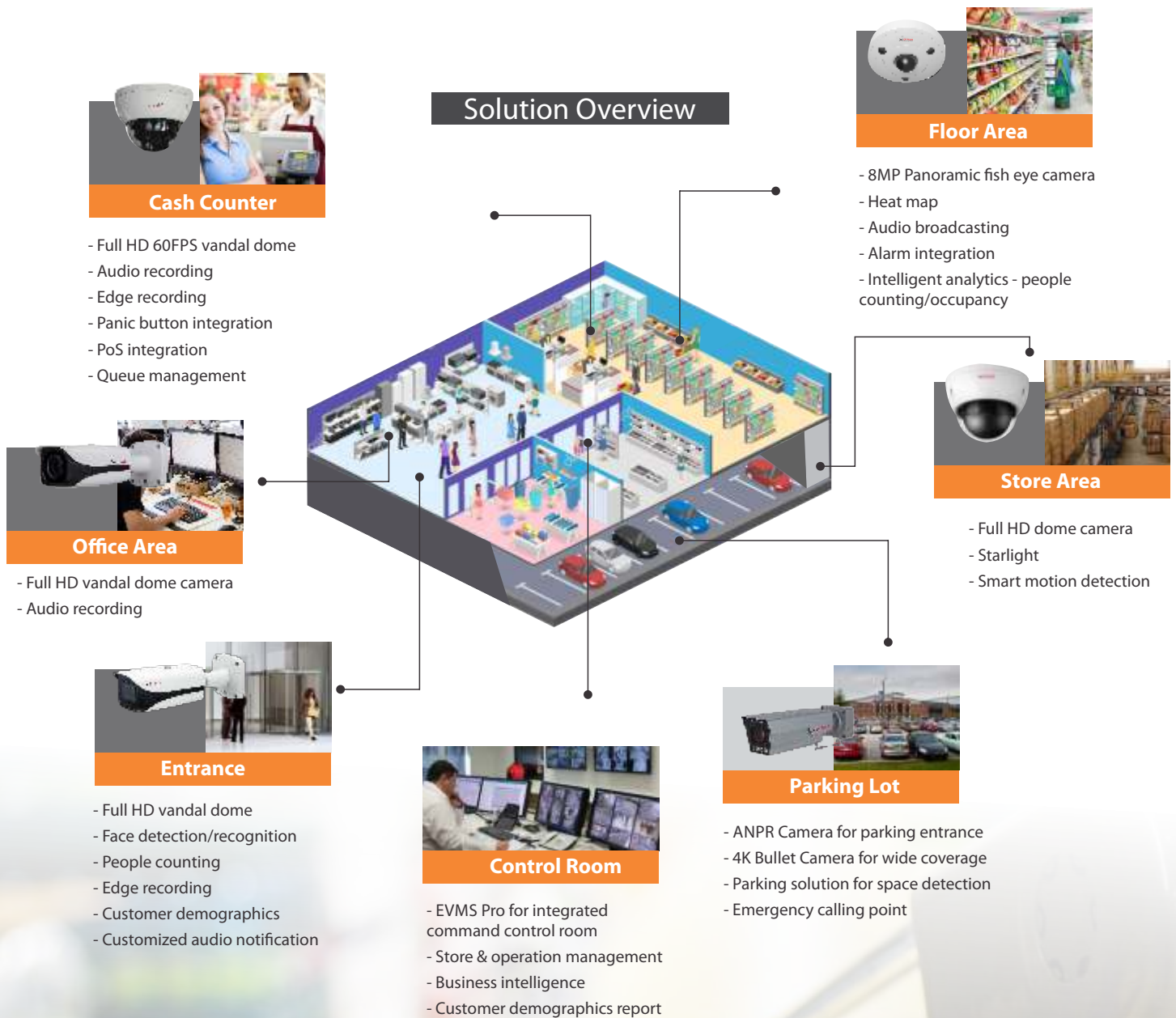


Retail Shop



Retail

Surveillance Solution



Retail Solution

CP-UNC-EH4K12L1-VM

12 MP Full HD Network Fisheye Camera



- Features:
- 1/1.7" 12MP CMOS Image Sensor
- H.265 & H.264 triple-stream encoding
- Max. 25fps@12MP
- 1.98mm fixed lens
- DWDR, Day/Night(ICR), 3D-DNR, AWB, AGC, BLC
- IR Range of 10 Mtrs., IP67, IK10, PoE, SD Card
- Mobile Software: iCMOB, gCMOB, CMS Software: KVMS Pro

CP-UNC-TG41ZL12-VMD

4MP AI IR Network Bullet Camera



- Features:
- 1/1.8" 4MP PS CMOS Image Sensor
- Max. outputs 4MP(2688×1520)@50fps/60fps
- Instastream/H.265/Smart H.264+/H.264 coding
- WDR(140dB), Day/Night (ICR), 3D-DNR, EIS, Defog, ROI, AWB, AGC, BLC, HLC
- 8mm ~ 32mm Motorized lens
- IR Range of 120 Mtrs, IP67, IK10, Micro SD Card, ePoE, PoE+
- Mobile Software: iCMOB, gCMOB, CMS Software: KVMS Pro

CP-UNC-VE41ZL4E-VMD

4MP WDR AI IR Vandal Dome Camera - 40Mtr.



- Features:
- 1/1.8" 4MP PS CMOS Image Sensor
- 25/30fps@ (2688 × 1520), 50/60fps@1080P(1920 × 1080)
- Instastream, H.265 and H.264+ triple-stream encoding
- WDR(140dB), Day/Night (ICR), 3D-DNR, Defog, EIS, AWB, AGC, BLC, HLC
- 2.7 - 12mm Motorized Lens
- IR Range of 40 Mtrs, Micro SD Card, IP67, IK10, PoE
- Mobile Software: iCMOB, gCMOB, CMS Software: KVMS Pro

CP-UNC-VE21ZL4E-VMD

2MP Full HD AI WDR IR Vandal Dome Camera



- Features:
- 1/2.8" 2Megapixel PS CMOS Image Sensor
- Instastream/ H.265 / H.264+ / H.264 triple-stream encoding
- Max 25/30fps@1080P(1920×1080)
- 2.7mm ~ 13.5mm motorized lens
- WDR(120dB), Day/Night (ICR), 3D-DNR, EIS, Defog, ROI, AWB, AGC, BLC, HLC
- IR Range of 40 Mtrs., Support ePoE, PoE, IP67, IK10, Micro SD Card
- Mobile Software: iCMOB, gCMOB, CMS Software: KVMS Pro

CP-UNC-TT41L3-VM

4MP IR AI Enforcement Camera



- Features:
- 1/1.8" 4MP starlight CMOS sensor (1.411 cm)
- H.265 and H.264 dual codec
- Maximum Resolution: 2688 × 1520@25/30fps
- Built-in 10mm~50mm lens
- The maximum illumination distance is 30 Mtr
- IP67, IK10 rated

CP-UNC-VB21ZL4-VMDs

2MP Full HD WDR IR Network Vandal Dome Camera



- Features:
- 1/2.8" 2MP CMOS Image Sensor
- Instastream & H.265 triple-stream encoding
- Max. 25/30fps@2MP
- 2.7 - 13.5mm Motorized lens
- WDR(120dB), Day/Night(ICR), 3D-DNR, ROI, AWB, AGC, BLC, HLC
- Support Starlight Function
- IR Range of 40 Mtrs, IP67, IK10, Micro SD Card, PoE
- Mobile Software: iCMOB, gCMOB, CMS Software: KVMS Pro

CP-UNC-TE21ZL5P-VMD

2MP Full HD WDR IR Network Bullet Camera



- Features:
- 1/1.8" 2Megapixel PS CMOS Image Sensor
- Instastream/ H.265 / H.264+ / H.264 Quad-stream encoding
- Max 25/30fps@1080P(1920×1080)
- WDR(140dB), Day/Night (ICR), 3D-DNR, EIS, Defog, ROI, AWB, AGC, BLC, HLC
- 2.7mm ~ 12mm motorized lens
- IR Range of 50 Mtrs., Support Micro SD Card IP67, IK10, PoE, ePoE
- Mobile Software: iCMOB, gCMOB, CMS Software: KVMS Pro

CP-UNC-TE51ZL6T-VMDs

5MP WDR IR Network Bullet Camera



- Features:
- 1/2.7" 5MP CMOS Image Sensor
- AI Instastream, Instastream, H.265 & H.264 Quad-stream encoding
- Max. 25/30fps@5MP
- 2.7 mm~13.5mm Motorized Lens
- WDR(120dB), ROI, EIS, Day/Night(ICR), 3DNR, AWB, AGC, BLC, HLC
- IR Range of 60 Mtrs, IP67, IK10, Micro SD Card, Built-in Mic, People Counting, Face Detection, ePoE, PoE
- Mobile Software: iCMOB, gCMOB, CMS Software: KVMS Pro

CP-UNR-4K5162-FI

16Ch. 4K AI Network Video Recorder



- Features:
- Up to 16 channel IP camera input
- Max. 384 Mbps incoming/recording/outgoing bandwidth
- Instastream/H.265/Smart H.264+/H.264/MJPEG codec decoding
- AI by recorder: 2-channel face detection and recognition, 4-channel perimeter protection, and 8-channel SMD Plus
- Support 2 SATA HDDs up to 16TB Each, 2 USB Ports (1 USB 3.0)
- AI by camera: Face detection and recognition, perimeter protection, SMD Plus, metadata, ANPR, stereo analysis, heat map, and people counting
- Mobile Software: iCMOB, gCMOB, CMS Software: KVMS Pro

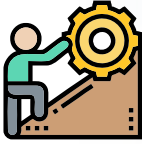


Education Solution

CP PLUS's Education Solution is a comprehensive security system developed to meet the unique safety requirements of educational institutions operating across borders. Designed to create a secure learning environment, this solution incorporates advanced surveillance technologies to safeguard students, faculty, and assets within educational campuses. Providing a comprehensive security framework for educational institutions, it combines advanced surveillance technologies with a multitude of features, specifically tailored to address the safety concerns unique to campuses. By fostering a secure environment, this solution contributes to the well-being and focused learning of students and the entire educational community.



Intelligent Surveillance for Education Vertical



CHALLENGES

- Protection of students and staff
- Protection from unauthorized intruders
- Monitoring of unknown vehicle entry
- Private areas monitoring
- Misbehaviour of staff or student
- Safety and security while travelling in school buses
- Protection from criminal acts, drugs etc.
- Prevention from Bullying/Eve teasing etc



SOLUTION

- High resolution cameras for 24/7 monitoring and recording
- Proper identification and logs of people at entry/exit points
- Periphery protection with intelligent analysis
- PTZ cameras for open area and playground, as most of the bullying/Eve teasing takes place in such areas.
- Emergency/Panic buttons at vulnerable points for immediate action
- Restriction of entry for unauthorized people
- Fool proof checking/frisking of weapons or non permit able gadgets

Primary
School



Higher
School



University

Education

Surveillance Solution

Solution Overview

- 4MP WDR vandal dome
- Audio integration for lecture recording
- Interactive panel for smart class



- ANPR Camera for parking entrance
- 4K Bullet Camera for wide coverage
- Parking solution for space detection
- Emergency calling point



- Mobile surveillance solutions
- On route tracking
- Board/deboard alerts to parents
- AI DSM & ADAS



- 4MP ANPR camera
- Edge recording



- PTZ camera with 360° view and smart tracking
- 4MP bullet camera
- Long range IR
- Intrusion detection
- Alarm Integration



- Full HD vandal dome
- Face detection/recognition
- Edge recording
- Human demographics detection
- Customized audio notification



- Full HD vandal dome
- Face detection/recognition
- Edge recording
- Human demographics detection
- Customized audio notification

Control Room

- EVMS Pro VMS for integrated command control room



Education Solution

CP-URP-H86FC1-4K

86" 4K Ultra HD Interactive Display



- Features:
- Android and Windows can be easily switched between (PC module is required for Windows OS)
 - 4K Ultra HD display that delivers a clear and sharp image, Vivid Color feature Supported
 - Screen sharing from multiple devices through wirelessly, such as Smart Phones, Computers, and Tablet
 - Touch Screen Panel
 - Built in Camera (SMP), Built In Mic, Built-in office document and media files support
 - Supports Dual Band Wi-Fi, Hot-Spot with enabling Hotspot and Wi-Fi at the same time Feature

CP-VTA-F1043

Face & Fingerprint Based Time Attendance Terminal



- Features:
- 2.8" HVGA Display
 - Support 1000 Face Recognition
 - Support 10000 Fingerprints
 - Support 200000 Storage Capacity
 - Support USB 2.0

CP-UNC-TT41L3-VM

4MP IR AI Enforcement Camera



- Features:
- 1/1.8" 4MP starlight CMOS sensor (1.411 cm)
 - H.265 and H.264 dual codec
 - Maximum Resolution: 2688 × 1520@25/30fps
 - Built-in 10mm~50mm lens
 - The maximum illumination distance is 30 Mtr
 - IP67, IK10 rated

CP-UNC-TE21ZL20E-VMD

2MP Full HD WDR IR Network Bullet Camera



- Features:
- 1/2.8" 2MP PS CMOS Image Sensor
 - Instastream and H.264+ triple-stream encoding
 - Max. 50/60fps@1080(1920×1080)
 - 5.3~64mm Motorized lens
 - WDR(120dB), Day/Night (ICR), 3D-DNR, ROI, AWB, AGC, BLC, HLC
 - IR Range of 200 Mtr, IP67, IK10, Micro SD Card, PoE
 - Mobile Software: iCMOB, gCMOB, CMS Software: KVMS Pro

CP-UNC-VE51ZL4E-VMD

5MP AI WDR IR Vandal Dome Camera - 40Mtr.



- Features:
- 1/2.7" 5 Megapixel PS CMOS Image Sensor (0.9407cm)
 - Instastream/H.265 / H.264+ / H.264 triple-stream Encoding
 - Max. 20fps@2592 × 1944, 50/60fps@1080P (1920 × 1080)
 - WDR(120dB), Day/Night (ICR), 3D-DNR, EIS, Defog, ROI, AWB, AGC, BLC, HLC
 - IR Range of 40 Mtrs.
 - 2.7mm ~13.5mm motorized lens
 - Support ePoE, IP67, IK10, Micro SD Card
 - Mobile Software: iCMOB, gCMOB, CMS Software: KVMS Pro

CP-UNC-VC41L5-VMDS

4 MP WDR IR Network Vandal Dome Camera



- Features:
- 1/2.7" 4MP CMOS Image Sensor
 - Instastream, H.265 & H.264+ triple-stream encoding
 - Max. 25/30fps@4MP
 - 2.8mm fixed lens (3.6mm, 6mm optional)
 - WDR(120dB), Day/Night (ICR), 3D-DNR, ROI, AWB, AGC, BLC, HLC
 - IR Range of 50 Mtrs., IP67, IK10, SD Card, PoE
 - Support Starlight Function
 - Mobile Software: iCMOB, gCMOB, CMS Software: KVMS Pro

CP-UNP-E3041L15-DAP

4MP 30x WDR Network IR PTZ Camera



- Features:
- 1/3" 4MP PS CMOS Image sensor
 - Max. 25/30fps@4MP
 - Powerful 30x Optical and 16x Digital zoom
 - Instastream/H.265/H.264+/H.264 dual stream encoding
 - Up to 300 presets, auto scan, 8 tour, 5 pattern, auto pan
 - IR Range of 150 Mtr., IP66, Support PoE+
 - WDR(120dB), 3D-DNR, Day/Night(ICR), EIS, Defog, ROI, BLC, HLC
 - Mobile Software: iCMOB, gCMOB, CMS Software: KVMS Pro



VMS software solution



- Server/Client Architecture
- Cascading for Multi-site Management
- Failover & Hot Standby
- Realtime Alarm Management
- Google Map Support
- Auto-Register
- Onvif Compliant
- Cloud Installation
- Automatic/Manual Data Migration & Restoration
- Video Wall
- Management

Education Solution

Mobile Surveillance

CP-UA-DSM1

Driver Monitoring Camera



- Features:
- 1/4" 1MP CMOS image sensor
- Max. Outputs 50 Hz (1280 × 720)@25fps, Max. Outputs 60 Hz (1280 × 720)@30fps
- IR Range of 3m
- 2D/3D NR, BLC, HLC, AGC, IPS4
- 9V–16 VDC

CP-UA-ADAS1

Front-view Monitoring Mobile Camera



- Features:
- 1/2.8" 2MP CMOS Image Sensor
- Outputs 50 Hz (1920 × 1080)@25 fps. Outputs 60 Hz (1920 × 1080)@30 fps
- WDR, 3D NR, BLC, HLC, AGC, IPS4
- 9V–16 VDC

CP-UNC-WC21L5C-MDS

2MP Full HD WDR IR Wedge Camera



- Features:
- 1/2.8" 2Megapixel PS CMOS Image Sensor
- Max. 2MP(1920 × 1080)@30fps
- Instastream and H.264+ triple-stream encoding
- WDR(120dB), Day/Night (ICR), 3D-DNR, ROI, AWB, AGC, BLC, HLC
- 3.6mm Lens (2.8mm, 6mm Optional)
- IR Range of 50 Mtrs, IP67, IK10, Micro SD Card, PoE
- Built-in Mic
- Support Starlight Technology

CP-UNP-M3020L15-V2

2 MP Full HD Network Mobile Positioning System



- Features:
- 1/2.8" 2MP CMOS Image Sensor (0.9071 centimeters)
- Pan range: 360° endless, speed up to 80°/s
- H.264 and MJPEG Encoding
- DWDR, 2D/3D DNR, AGC, AWB, BLC, HLC
- 4.5mm ~ 135mm Lens
- IR Distance up to 150 Mtr., IP66
- Up to 255 Presets, 8 Tour, 5 Pattern, 5 Auto scan
- Powerful 30x Optical Zoom

CP-UNR-404T1-AI

4 Ch. PoE H.265 AI Mobile Network Video Recorder



- Features:
- Supports 4 Ch. 2MP PoE IP cameras input
- Support Instastream/ H.265 video compression
- Aviation connectors/ RJ45(Optional)
- Support 1 HDD and 1 SD card, 3 USB Ports (2.0)
- Support GPS, Wi-Fi and 3G/4G
- VGA/TV simultaneous video output
- Mobile Software: EMSS Pro, iCMOB/gCMOB (Live view and Playback)
- CMS Software: EMSS Pro, KVMS Pro (Live view and Playback)

CP-UA-M70T

7" Color Liquid Crystal Display



- Features:
- 7" Widescreen TFT-LCD Display
- LED Backlight
- M12 A-coding Connector

CP-UMK-41D

Mobile Control Keyboard



- Features:
- Small size, 22 buttons, suitable for patrol cars, buses, application software and other small systems to use.
- Four-dimensional operation joystick (3-axis and 1 button).
- So that a smaller volume to achieve more functionality Specifically for the use of cars, low power consumption

EMSS Pro

Enterprise Mobile Surveillance Software



- Features:
- High Reliability & compatibility
- Live View, Snapshot, local record, audio talk
- Mobile alarms, E-fence alarms, GPS statistics.
- Driver & Vehicle management
- GPS upload interval time.
- Service Management



Oil & Gas Solution

CP PLUS's Oil & Gas Solution is a robust and specialized security system designed to meet the unique challenges of the oil and gas industry. With a focus on critical infrastructure protection, this solution ensures comprehensive surveillance, threat detection, and operational safety in environments where security is paramount.

Combining cutting-edge technology and specialized features to create a comprehensive security system to meet the unique demands of the oil and gas industry. By addressing specific challenges such as perimeter security, intrusion detection, and environmental monitoring, this solution ensures the safety and integrity of critical infrastructure in these high-stakes environments.



Intelligent Surveillance for Oil & Gas Vertical



CHALLENGES

- Piracy, terrorism, vandalism, organized crime, and civil protest
- Shortfall in compliance of safety protocols
- Lack of process monitoring
- Trespassing by unauthorized individuals
- Lack of offsite monitoring
- Security and safety violations
- Inefficient day to day management of operations
- Integration of multiple security systems into a single platform



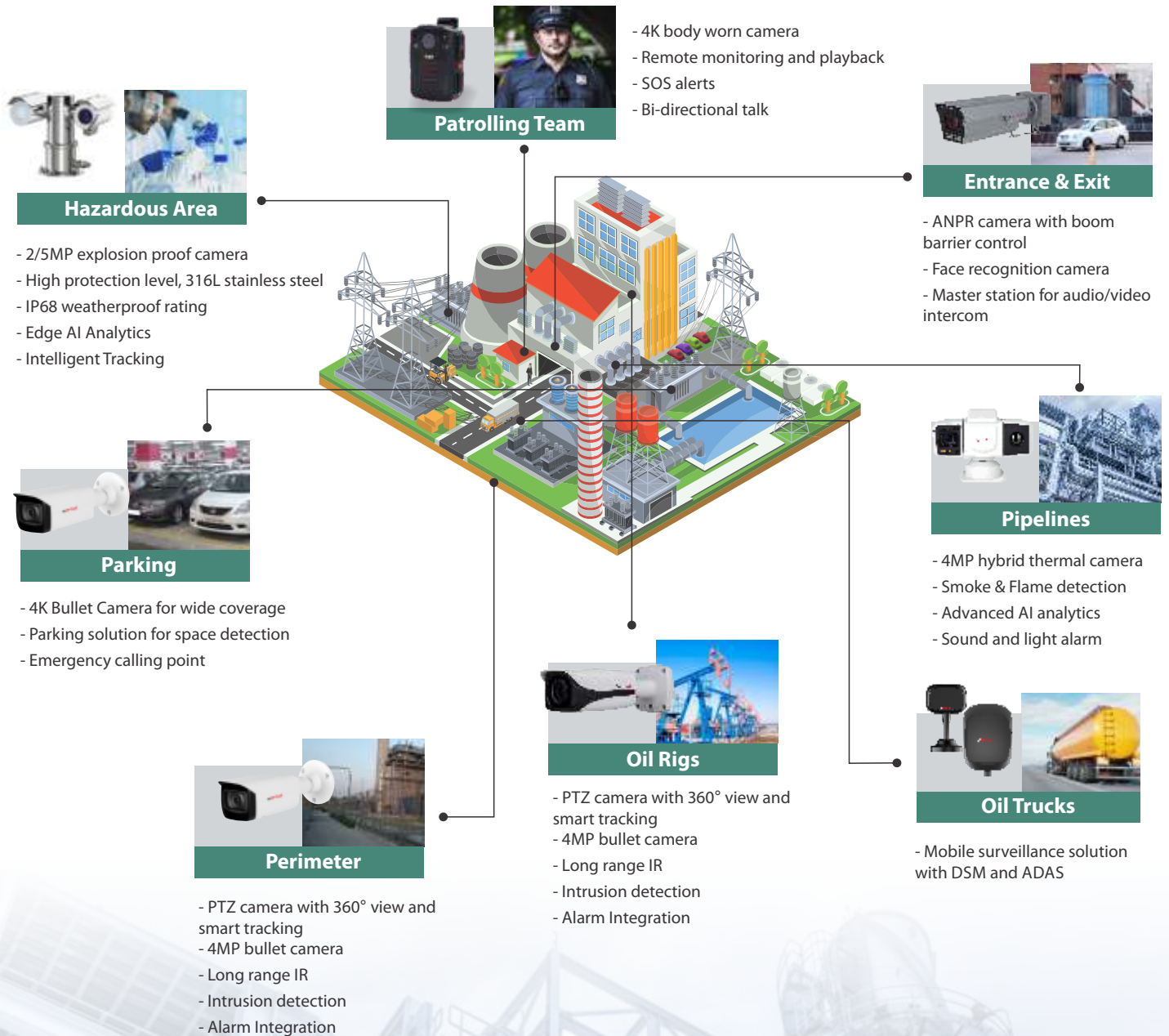
SOLUTION

- High Resolution HD (upto 4K) Panaromic cameras for wide coverage
- Artificial Intelligence based cameras to monitor unauthorized activities
- Explosion proof cameras for sensitive areas
- Thermal cameras for hazardous areas
- IP67 (weatherproof) & IK10 (vandal proof) rating cameras for outdoor locations
- Mobile DVR/NVR solution for fuel tanks with Alarm integration
- Body worn camera for site patrolling team
- Access control system to authorize staff and workers
- ANPR to capture vehicle no. plate at entry/exit points
- Video Management System for centralized monitoring, playback and integrated solution
- Health monitoring system for smooth running of surveillance system

Oil & Gas

Surveillance Solution

Solution Overview



Oil & Gas Solution

CP-UNC-TT41L3-VM

4MP IR AI Enforcement Camera



- Features:
- 1/1.8" 4MP starlight CMOS sensor (1.411 cm)
- H.265 and H.264 dual codec
- Maximum Resolution: 2688 × 1520@25/30fps
- Built-in 10mm~50mm lens
- The maximum illumination distance is 30 Mtr
- IP67, IK10 rated

CP-NNC-D2421

Thermal & Optical Network Dome Camera



- Features:
- Uncooled VOx Micro bolometer with 256×192 resolution
- Thermal Camera: 3.5 mm/7 mm fixed lens, Visible camera: 4 mm/8 mm fixed lens
- Built-in microphone and speaker, support sound-light alarm
- IR distance up to 35m~50mtr
- Support Built-in Microphone & Built-in Speaker
- SD Card up to 256GB

CP-NNC-T2521

Thermal & Optical Network Bullet Camera



- Features:
- Uncooled VOx Micro bolometer with 256×192 resolution
- Thermal Camera: 7mm/10mm fixed lens optional, Optical camera: 8 mm fixed lens
- Support human, vehicle, smoking, fire point, smoke and fire detection
- IR distance up to 55mtr
- Support Built-in Speaker
- SD Card up to 256GB

CP-NNC-T6461

Thermal & Optical Network Bullet Camera



- Features:
- VOx uncooled focal plane detector with 640×512 resolution
- Thermal: 9/15/25/35/50 mm fixed lens, optical: 4/6/10~30mm lens optional
- Support human, vehicle and fire point detection
- IR distance up to 100m
- Support temperature monitoring and exception alarm
- SD Card up to 256GB
- Support Built-in Microphone & Built-in Speaker

CP-UNC-T421H

Thermal Network Hybrid Bullet Camera



- Features:
- Vanadium oxide uncooled focal plane detector
- 4MP Progressive scan CMOS Image Sensor (Visible)
- Built-in white light and speaker that produce light and sound alarms to deter intruders
- Built-in IR LED with a maximum illumination distance of 35Mtr
- Dual image fusion (visible and thermal images).
- IP67 Rating
- Mobile Software: iCMOB, gCMOB, CMS Software: KVMS Pro

CP-UNP-Z6481H-T

Thermal Network Mini Hybrid Pan & Tilt Camera



- Features:
- Vanadium oxide uncooled focal plane detector
- 1/1.8" 4Megapixel progressive scan CMOS
- Support tripwire, intrusion, and human/vehicle classification
- Up to 300 presets, 5 auto scan, 8 tour, 5 pattern
- Temperature measurement range of -20 °C to +550 °C
- IR Distance: 100Mtr., Support Micro SD Card, IP66
- Mobile Software: iCMOB, gCMOB, CMS Software: KVMS Pro

CP-CNV-ST51ZL10-VMDF

5MP 30x EXPLOSION-PROOF Network CAMERA



- Features:
- 1/2.8" Progressive Scan CMOS Image Sensor
- Max. 25/30fps@5MP
- 5.3mm~ 159mm Lens (30x zoom)
- WDR(120dB), Day/Night(ICR), Defog, EIS, AGC, AWB, BLC, HLC
- H.265 / H.264 / MJPEG Video Compression
- Up to 300 Presets
- IP68, Micro SD Card, 316L Stainless Steel

CP-PNV-S3051L20-F

5MP 30x EXPLOSION-PROOF Network PTZ CAMERA



- Features:
- 1/2.8" Progressive Scan CMOS Image Sensor
- Max. 25/30fps@5MP
- 5.3mm~ 159mm Lens (30x zoom)
- WDR(120dB), Day/Night(ICR), Defog, EIS, AGC, AWB, BLC, HLC
- H.265 / H.264 / MJPEG Video Compression
- Up to 400 Presets, Tour (upto 12), Scan (upto 12), Pattern (upto 6)
- IP68, Micro SD Card, 316L Stainless Steel

CP-UNR-4K5162-FI

16Ch. 4K AI Network Video Recorder



- Features:
- Up to 16 channel IP camera input
- Max. 384 Mbps incoming/recording/outgoing bandwidth
- Instastream/H.265/Smart H.264+/H.264/MJPEG codec decoding
- AI by recorder: 2-channel face detection and recognition, 4-channel perimeter protection, and 8-channel SMD Plus
- Support 2 SATA HDDs up to 16TB Each, 2 USB Ports (1 USB 3.0)
- AI by camera: Face detection and recognition, perimeter protection, SMD Plus, metadata, ANPR, stereo analysis, heat map, and people counting
- Mobile Software: iCMOB, gCMOB, CMS Software: KVMS Pro



Oil & Gas Solution

Mobile Surveillance

CP-UA-DSM1

Driver Monitoring Camera



- Features:
- 1/4" 1MP CMOS image sensor
- Max. Outputs 50 Hz (1280 × 720)@25fps, Max. Outputs 60 Hz (1280 × 720)@30fps
- IR Range of 3m
- 2D/3D NR, BLC, HLC, AGC, IP54
- 9V–16 VDC

CP-UA-ADAS1

Front-view Monitoring Mobile Camera



- Features:
- 1/2.8" 2MP CMOS Image Sensor
- Outputs 50 Hz (1920 × 1080)@25 fps. Outputs 60 Hz (1920 × 1080)@30 fps
- WDR, 3D NR, BLC, HLC, AGC, IP54
- 9V–16 VDC

CP-UNC-WC21L5C-MDS

2MP Full HD WDR IR Wedge Camera



- Features:
- 1/2.8" 2Megapixel PS CMOS Image Sensor
- Max. 2MP(1920 × 1080)@30fps
- Instastream and H.264+ triple-stream encoding
- WDR(120dB), Day/Night (ICR), 3D-DNR, ROI, AWB, AGC, BLC, HLC
- 3.6mm Lens (2.8mm, 6mm Optional)
- IR Range of 50 Mtrs, IP67, IK10, Micro SD Card, PoE
- Built-in Mic
- Support Starlight Technology

CP-UNP-M3020L15-V2

2 MP Full HD Network Mobile Positioning System



- Features:
- 1/2.8" 2MP CMOS Image Sensor (0.9071 centimeters)
- Pan range: 360° endless, speed up to 80°/s
- H.264 and MJPEG Encoding
- DWDR, 2D/3D DNR, AGC, AWB, BLC, HLC
- 4.5mm ~ 135mm Lens
- IR Distance up to 150 Mtr., IP66
- Up to 255 Presets, 8 Tour, 5 Pattern, 5 Auto scan
- Powerful 30x Optical Zoom

CP-UNR-404T1-AI

4 Ch. PoE H.265 AI Mobile Network Video Recorder



- Features:
- Supports 4 Ch. 2MP PoE IP cameras input
- Support Instastream/ H.265 video compression
- Aviation connectors/ RJ45(Optional)
- Support 1 HDD and 1 SD card, 3 USB Ports (2.0)
- Support GPS, Wi-Fi and 3G/4G
- VGA/TV simultaneous video output
- Mobile Software: EMSS Pro, iCMOB/gCMOB (Live view and Playback)
- CMS Software: EMSS Pro, KVMS Pro (Live view and Playback)

CP-UA-M70T

7" Color Liquid Crystal Display



- Features:
- 7" Widescreen TFT-LCD Display
- LED Backlight
- M12 A-coding Connector

CP-UMK-41D

Mobile Control Keyboard



- Features:
- Small size, 22 buttons, suitable for patrol cars, buses, application software and other small systems to use.
- Four-dimensional operation joystick (3-axis and 1 button).
- So that a smaller volume to achieve more functionality Specifically for the use of cars, low power consumption

EMSS Pro

Enterprise Mobile Surveillance Software



- Features:
- High Reliability & compatibility
- Live View, Snapshot, local record, audio talk
- Mobile alarms, E-fence alarms, GPS statistics.
- Driver & Vehicle management
- GPS upload interval time.
- Service Management



Smart Patrol Solution

CP PLUS's Smart Patrol Solution is a cutting-edge security system designed to empower law enforcement agencies with advanced tools for crime prevention, investigation, and public safety. This comprehensive solution integrates state-of-the-art technologies to enhance situational awareness, streamline operations, and ensure a proactive approach to law enforcement challenges.

Designed to meet the diverse needs of modern law enforcement, this solution incorporates features such as facial recognition, video analytics, and mobile surveillance, this solution empowers law enforcement agencies to enhance public safety, prevent crimes, and respond effectively to dynamic security challenges.



Intelligent Surveillance for Smart Patrol Vertical



CHALLENGES

- Recording their interaction with the public
- Capturing an offense and identifying the party involved
- Ensuring both officer & citizen accountability
- To gather tamper-proof video evidence from crime scenes
- Creating mental deterrence
- Instructing quick reaction team while in live action
- Violation of traffic laws



SOLUTION

- ANPR solution to capture the number plate & to avoid violation of traffic rules.
- Edge-based analytics cameras equipped with analytical features like trip wire, intrusion detection, face detection, loitering, and more.
- PTZ cameras which are ideal for open areas, advantageous primarily for their unique feature of being able to pan-tilt and zoom in to provide close view of selected sections of the field of view.
- Body worn surveillance solution a video recording system, utilised by Law Enforcement Agencies to collect Evidence
- Mobile DVR/NVR solutions for monitoring live feed from the site



Smart Patrol Solution

CP-DBP-H20

Full HD Body Worn Camera



- Features:
- 1080P color Video Recording
- Easy one-touch Recording
- 1.8m drop test
- 2" LCD screen with instant playback of video, photos or audio
- Built-in high-quality microphone and speaker
- 32GB Internal storage
- Support IP65

CP-EBC-4413

4MP Body Worn Camera



- Features:
- Supports 2560 x 1440P HD recording
- Support 120 degree wide angle
- Support 10 meters night vision
- Supports 58MP Picture Capture
- Support overwrite automatically when SD card is Full
- Supports 12 hours continues recording based on resolution 720P@30fps
- Support IP67

CP-EBC-1073-K

4K Body Worn Camera



- Features:
- Support 4K resolution for recording
- 2.4 inch touch screen supported
- Support built-in 4G for live video transmission
- Support built-in Wi-Fi for uploading
- Support built-in GPS for live tracking
- Support optional G-sensor and Gyro
- Hot-swappable 3050mAh lithium battery
- Built-In storage can extend to 256GB

CP-UBC-2147-V2

Body Worn Camera



- Features:
- Android 9.0
- 2.0" touch screen
- 8-core 1.8 GHz High-Performance CPU
- Supports 1080p@30fps recording, the image resolution up to 34MP
- H.265/H.264 high compression coding
- Support 2G/3G/4G Cellular network, Wi-Fi, Bluetooth, NFC, GPS/GLONALL
- 16GB Internal storage and support external SD card storage which can be expanded up to 256GB (Support 64GB Internal storage Optional)
- One press to record video/audio/alarm/PTT

CP-DDS-N10

10 Port Docking Station



- Features:
- 10 Ports Docking slot
- The charging current is 1A-1.5A, supporting chargingprotection
- USB 2.0 HUB, transmission rate ≥ 40
- MTBF $\geq 20000h$

CP-EDS-Y08-V2

10 Ports Docking Station with Screen



- Features:
- 7 inches touch screen with resolution of 1024 x 600.
- Support 10 channel camera for backup and recharge
- Priority exporting channel supported
- Support Ethernet port for network function
- Local search and playback supported
- Fast data export and battery recharge
- Support to upload data to the center server automatically
- Support different user authority access

CP-UA-M13T-R

Data Collection Station/Control Module



- Features:
- Supports separate installation and removal. One control module can be connected to 4 data collection modules (32 MPTs)
- With 13.3" 1920 x 1080 HD capacitive touch screen, it is easy to operate
- Unlock the dock by face, fingerprint and password
- Multiple dock unlock methods: Unlocking single dock with software, and unlocking all docks at the same time with software or physical key (in a particular case)
- With built-in lithium battery, when fully charged, you can unlock all docks at least once after the control module is powered off for 10 consecutive days
- Charges and collects data on body cameras and MPTs, and uploads collected data
- Supports up to 6 HDDs of 10TB, and Raid 0/1/5/10

PVMS Pro

Center Data Management Software



- Features:
- Cloud server installation supported.
- Support to manage all the data uploaded from different docking station.
- Support remote access for playback, search download, edition and other operations.
- Massively scalable, and supports 1,000's of simultaneous users.
- Support statistic and analysis, different report outcome.
- Extensive flexibility of security, evidence, and fleet management.
- On-premise data storage provides the quickest access to video evidence.
- Support statistic and analysis, different report outcome.



Smart Patrol Solution

Mobile Surveillance

CP-UA-DSM1

Driver Monitoring Camera



- Features:
- 1/4" 1MP CMOS image sensor
- Max. Outputs 50 Hz (1280 × 720)@25fps, Max. Outputs 60 Hz (1280 × 720)@30fps
- IR Range of 3m
- 2D/3D NR, BLC, HLC, AGC, IP54
- 9V–16 VDC

CP-UA-ADAS1

Front-view Monitoring Mobile Camera



- Features:
- 1/2.8" 2MP CMOS Image Sensor
- Outputs 50 Hz (1920 × 1080)@25 fps. Outputs 60 Hz (1920 × 1080)@30 fps
- WDR, 3D NR, BLC, HLC, AGC, IP54
- 9V–16 VDC

CP-UNC-WC21L5C-MDS

2MP Full HD WDR IR Wedge Camera



- Features:
- 1/2.8" 2Megapixel PS CMOS Image Sensor
- Max. 2MP(1920 × 1080)@30fps
- Instastream and H.264+ triple-stream encoding
- WDR(120dB), Day/Night (ICR), 3D-DNR, ROI, AWB, AGC, BLC, HLC
- 3.6mm Lens (2.8mm, 6mm Optional)
- IR Range of 50 Mtrs, IP67, IK10, Micro SD Card, PoE
- Built-in Mic
- Support Starlight Technology

CP-UNP-M3020L15-V2

2 MP Full HD Network Mobile Positioning System



- Features:
- 1/2.8" 2MP CMOS Image Sensor (0.9071 centimeters)
- Pan range: 360° endless, speed up to 80°/s
- H.264 and MJPEG Encoding
- DWDR, 2D/3D DNR, AGC, AWB, BLC, HLC
- 4.5mm ~ 135mm Lens
- IR Distance up to 150 Mtr., IP66
- Up to 255 Presets, 8 Tour, 5 Pattern, 5 Auto scan
- Powerful 30x Optical Zoom

CP-UNR-404T1-AI

4 Ch. PoE H.265 AI Mobile Network Video Recorder



- Features:
- Supports 4 Ch. 2MP PoE IP cameras input
- Support Instastream/ H.265 video compression
- Aviation connectors/ RJ45(Optional)
- Support 1 HDD and 1 SD card, 3 USB Ports (2.0)
- Support GPS, Wi-Fi and 3G/4G
- VGA/TV simultaneous video output
- Mobile Software: EMSS Pro, iCMOB/gCMOB (Live view and Playback)
- CMS Software: EMSS Pro, KVMS Pro (Live view and Playback)

CP-UA-M70T

7" Color Liquid Crystal Display



- Features:
- 7" Widescreen TFT-LCD Display
- LED Backlight
- M12 A-coding Connector

CP-UMK-41D

Mobile Control Keyboard



- Features:
- Small size, 22 buttons, suitable for patrol cars, buses, application software and other small systems to use.
- Four-dimensional operation joystick (3-axis and 1 button).
- So that a smaller volume to achieve more functionality Specifically for the use of cars, low power consumption

EMSS Pro

Enterprise Mobile Surveillance Software



- Features:
- High Reliability & compatibility
- Live View, Snapshot, local record, audio talk
- Mobile alarms, E-fence alarms, GPS statistics.
- Driver & Vehicle management
- GPS upload interval time.
- Service Management





CP PLUS Group

AUSTRALIA | BANGLADESH | CHINA | CZECH REPUBLIC | GERMANY | HONGKONG
INDIA | INDONESIA | NIGERIA | PAKISTAN | PHILIPPINES | SAUDI ARABIA | SINGAPORE
SOUTH AFRICA | SRI LANKA | TAIWAN | THAILAND | UAE | VIETNAM
sales@cpplusworld.ae | www.cpplusworld.ae

