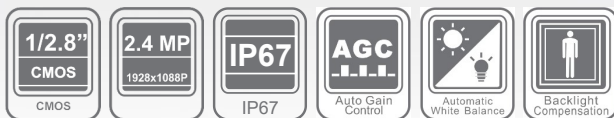


CP-GPC-DA24PL2-SE

2.4MP Full-color Guard+ Dome Camera - 20Mtr.

- 1/2.8" 2.4MP CMOS Image Sensor (0.9071 centimetres)
- Max 30fps@2.4MP
- DWDR, 2D-DNR, AWB, AGC, BLC
- 3.6mm Fixed lens (2.8mm Optional)
- Illumination Distance of 20 Mtrs, IP67
- Support Full-color starlight
- CVI/CVBS/AHD/TVI switchable



System Overview

With the help of the new Guard+ Series of Cameras by CP PLUS, surveillance at night has substantially been made easier as vividly colorful images can be captured even in a completely dark scene. The leading part in this highly efficient surveillance solution is played by the 2.4MP Full-Color Cameras that show the detailing in the varied colors of the object in the scene even during night time.

Functions

Full Color

The Full-Color technology that has been ingrained in this camera lets you enjoy an image in full-color even during night time as this technology automatically illuminates the image with the accurate detailing of colors from the scene.



CP-GPC-DA24PL2-SE

2.4MP Full-color Guard+ Dome Camera - 20Mtr.

Functions

Illumination Distance

Numerous crystal illumination provide detailed images even in very low light conditions. These illumination adjust the infrared intensity for distinct images in dark environments for up to 20mtrs.

UNI+ technology

CP PLUS Analog HD cameras offer compatibility across all the available technologies - CVBS, TVI, HDCVI, AHD and HDx, making upgrading simple and hassle-free.

Power protection

With a voltage tolerance range of ± 30 , these cameras are suitable even in fluctuating power conditions.

Plug & Play

CP PLUS Guard+ cameras are simple to configure and install.

About CP PLUS

The brand that is on its way to lead the world when it comes to the security and surveillance industry, CP PLUS, keeps bombarding the market with the most reliable range of products that have been designed carefully and methodically to automate the whole surveillance and security process, no matter how big your premises are.

It was the initiative to help the public in the area where they are the most vulnerable and to empower the sense of safety in our hearts that had conceptualized CP PLUS. And embarking on its mission to make the world a safer and more secure place has taken the brand's journey to unprecedented levels even when compared to international competitors.



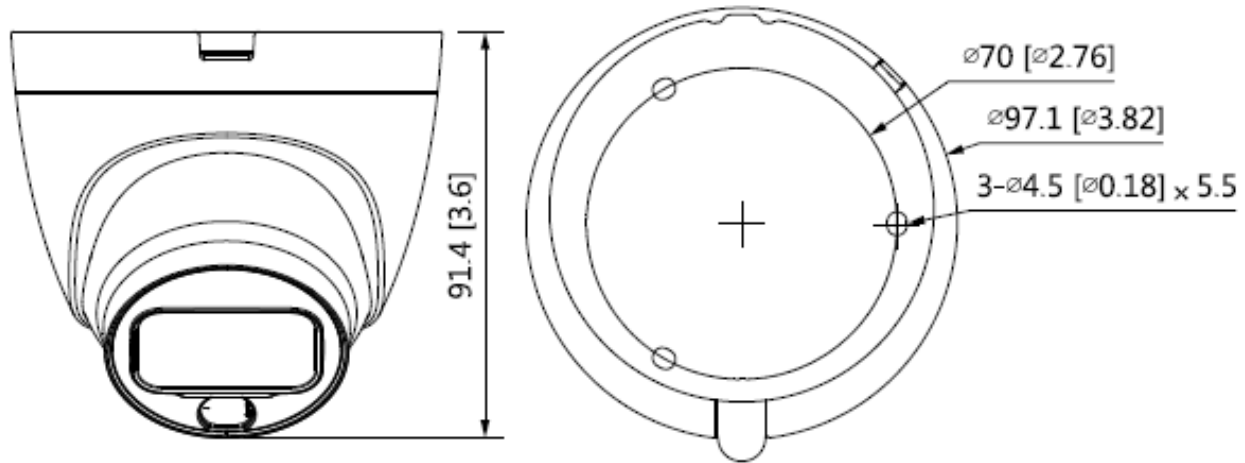
CP-GPC-DA24PL2-SE

2.4MP Full-color Guard+ Dome Camera - 20Mtr.

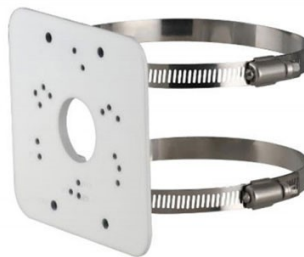
Feature	Specification
Image Sensor	1/2.8" 2.4MP CMOS (0.9407 centimetres)
Minimum Illumination	0.01Lux/F1.6, 0Lux white light on
Shutter Speed	PAL: 1/25~1/100000s NTSC: 1/30~1/100000s
White Balance	Auto/Manual
Lens	3.6mm (2.8mm Optional)
Lens Type	Fixed-focal
Mount Type	M12
Max Aperture	F1.6
Iris Type	Fixed
S/N Ratio	>65dB
Close Focus Distance	2.8mm: 0.6m ; 3.6mm: 1.2m
DORI Distance	2.8mm: 38.6m (Detect) 15.4m (Observe) 7.7m (Recognize) 3.9mm (Identify) 3.6mm: 55.2m (Detect) 22.1m (Observe) 11.0m (Recognize) 5.5mm (Identify)
Noise Reduction	2D-NR
Gain Control (AGC)	Auto/Manual
Back Light Compensation	BLC/ DWDR
Angle of View	2.8mm: 126.2° × 106° × 56.5° (diagonal × horizontal × vertical) 3.6mm: 103.6° × 86.9° × 46.3° (diagonal × horizontal × vertical)
White Balance	Auto/ Manual
Video Streaming	CVI: PAL: 1080P@25fps; 720P@25fps; NTSC: 1080P@30fps; 720P@30fps; AHD: PAL: 1080P@25fps; NTSC: 1080P@30fps TVI: PAL: 1080P@25fps; NTSC: 1080P@30fps; CVBS: PAL: 960H; NTSC: 960H

Feature	Specification
Video Output	Video output choices of CVI/TVI/AHD/CVBS by one BNC port
Illumination	Illumination Distance of 20 Mtr.
Smart Light	Yes
Mirror	Off/On
Privacy Masking	Off/On (8 area, rectangle)
Power Source	12V DC \pm 30%
Power Consumption	Max 3.0W (12V DC, White Light on)
Operating Temperature	-40°C ~ +60°C (-40°F to 140°F) / Less than <95% RH (non-condensation)
Storage Temperature	-40°C ~ +60°C (-40°F to 140°F) / Less than <95% RH (non-condensation)
Weatherproof Standard	IP67
Casing	Inner core: metal + plastic ; Cover: plastic ; Pedestal: plastic
Dimension	ϕ 97.1 mm \times 91.4 mm (ϕ 3.82" \times 3.6")
Weight	0.21kg

Dimensions (mm/inch)



Accessories : Optional



CP-UA-B2P
Pole Mount

Company Name:

CP PLUS (Aditya Infotech Ltd.)
F-28 Okhla Industrial Area, Phase 1,
New Delhi - 110020, INDIA

Contact Mail ID :- customercare@cpplusworld.com